

# TrendForm®

The Value System



# TrendForm®

The Value System

Bridging the gap between  
Trend Form lays to rest the  
should cost more than tra



**Aesthetics, Design, Value and Quality.**  
**Overcome the misconception that Tile Systems**  
**are inferior to Traditional Monolithic Panel Systems.**



# TrendForm®

The Value System





**Panel Frames** can be low now and tall later. They are structurally stackable in a multitude of heights and widths for complete flexibility. TrendForm is designed to change with ease, experiencing little or no work disruption.



# TrendForm®

The Value System

## R Series

R series provide you a rounded design remains the traditional look of Trend Form system. With 3" thickness along with 6 height and 6 width, customize design will fit the best need for the working environment.





# TrendForm®

The Value System

**L Series** is ready to bring TrendForm to a new era. Combinations of low and tall panel frames will fit all your need.







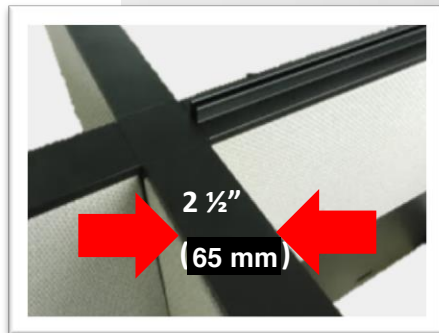
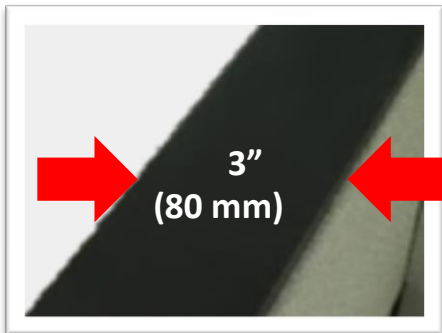
# TrendForm®

The Value System

Frameless glass add-on provide a technical, clean, and simple look and bring the working environment into an open space.



The Linear Design will be available with an options of 3" thickness and 2 ½" thickness.

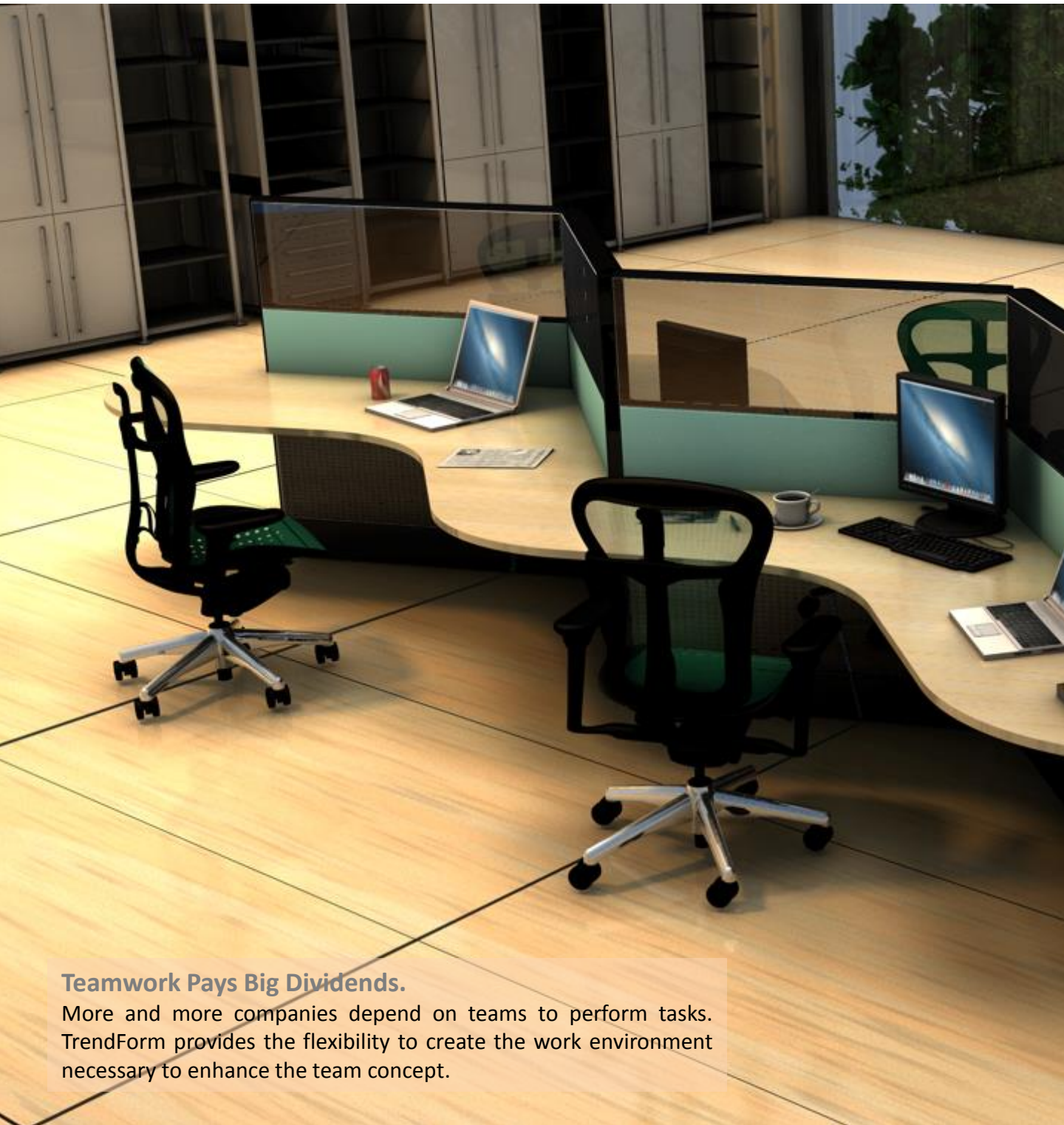






# TrendForm®

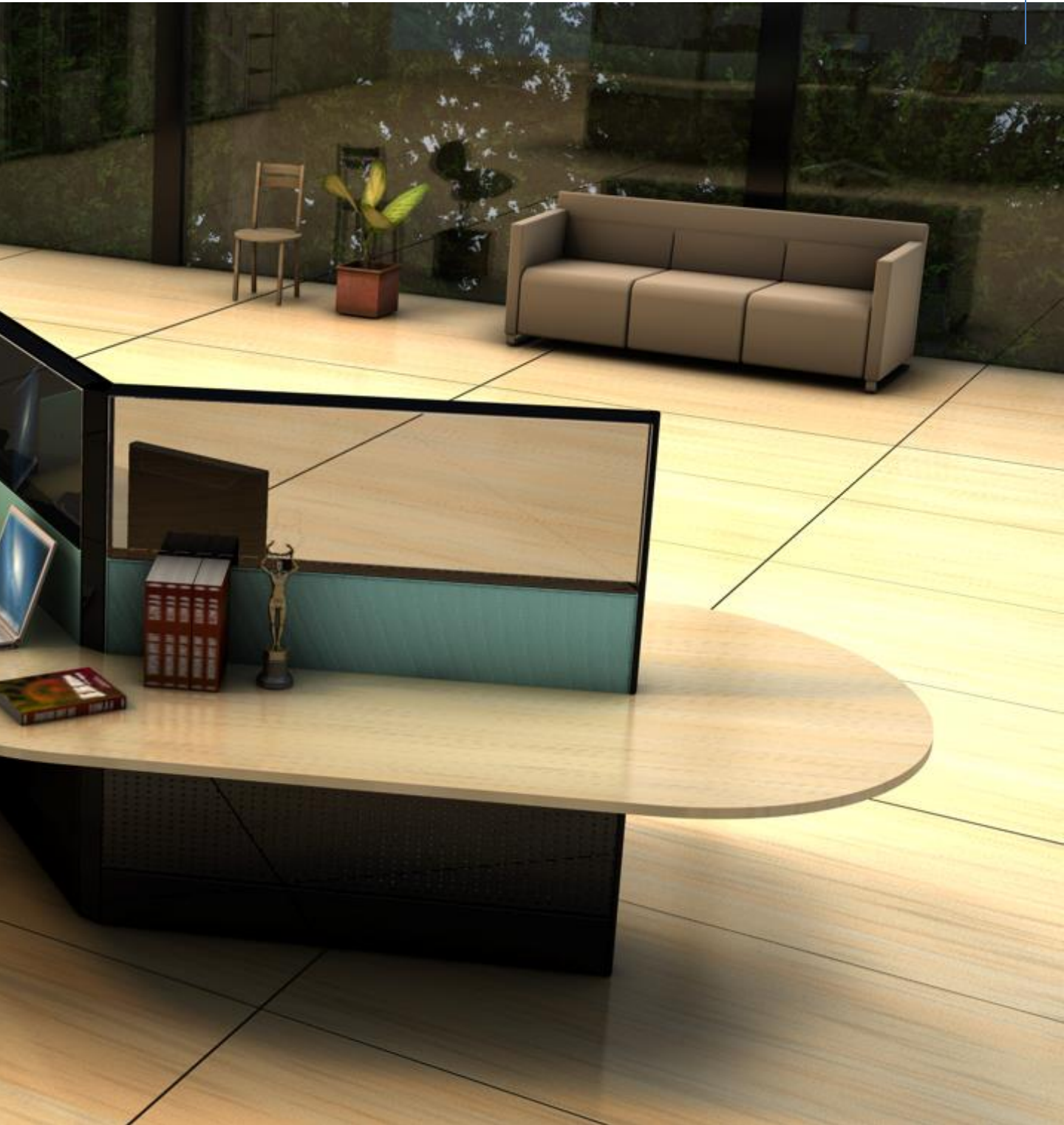
The Value System



## **Teamwork Pays Big Dividends.**

More and more companies depend on teams to perform tasks. TrendForm provides the flexibility to create the work environment necessary to enhance the team concept.





# TrendForm®

The Value System

## Tile Options



**Marker Board Tiles** promote idea sharing and quick notations.



**Wood Tiles** maintain the traditional look for leadership working environment.



**Tackable Acoustical Tiles** stay the same clean look as metal tile but easy to pin notes on.



**Open Frame Tiles** are the perfect solution for access to a team member or outlets in the office walls.



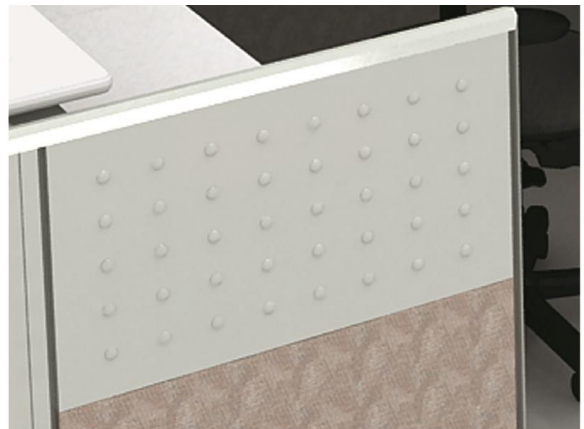
**Glass Tiles** create separation without isolation. Team members can collaborate and enjoy natural light.



**Accessory Hanging Tiles** allow for a multitude of support components.



**Air Flow Tiles.** Perforated metal tiles facilitate important air circulation thus providing a healthy and more comfortable work environment.



**Embossed Circle/ Squares Tiles/ Metal Tiles** add a technical look and provide magnetic support for notes.

# TrendForm®

The Value System

## Storage and LED Task Light

**Binder Bin and Open Shelf** provide the office enough space for storage. Optional with different door lifting styles.



**LED Task Light** is sustains the brilliance of natural daylight within the shaded confines of the workplace.

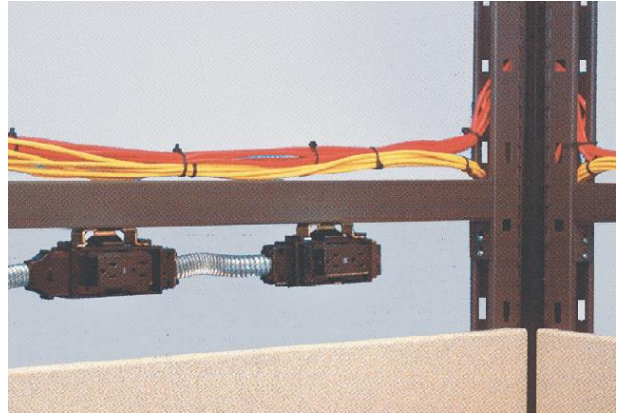
**LED Task Light** is LEED credit eligibility as well as ROHS environmentally friendly. Also, Aluminum housing all recyclable at end of life.



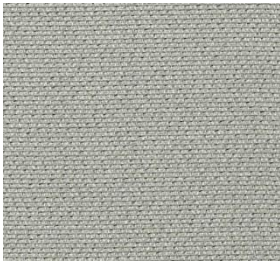


## Electrical, Power Way & Belt Line Options

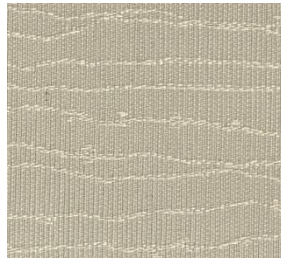
The universal electrical system with clean look without the mess cable around.



## Fabric Options



TF-0601  
Grey



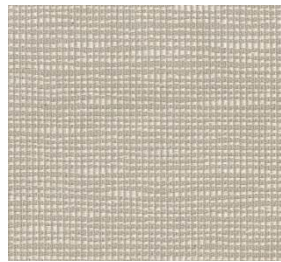
TF-0602  
Reed Grass



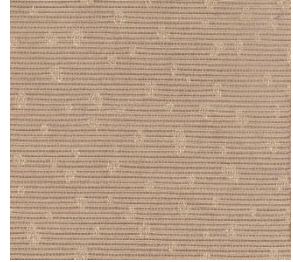
TF-0609  
Morning Dew



TF-0601  
Wheat



TF-0608  
Twilight



TF-0605  
Random

# TrendForm®

The Value System

## TYPICAL WORK STATION SAMPLE



TYP88.4A



TYP68.4A



120 Recpt.1B



TYP66.4A

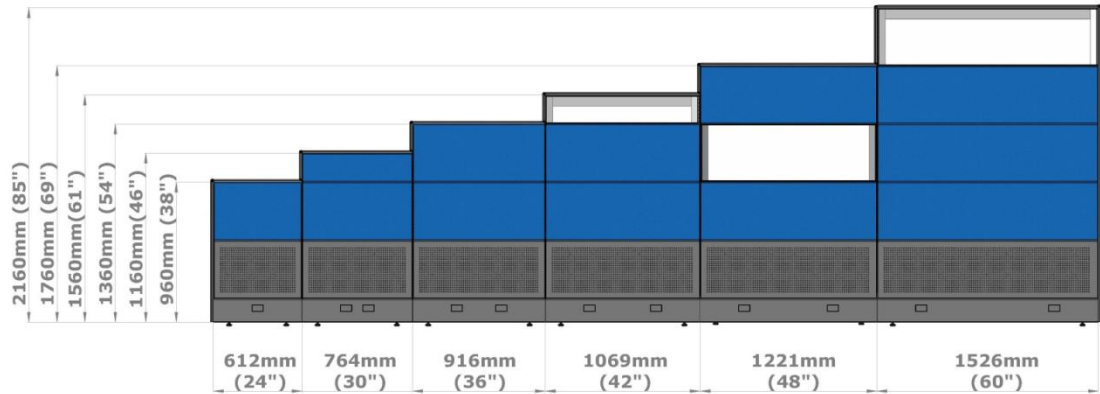


TYP911M.1A

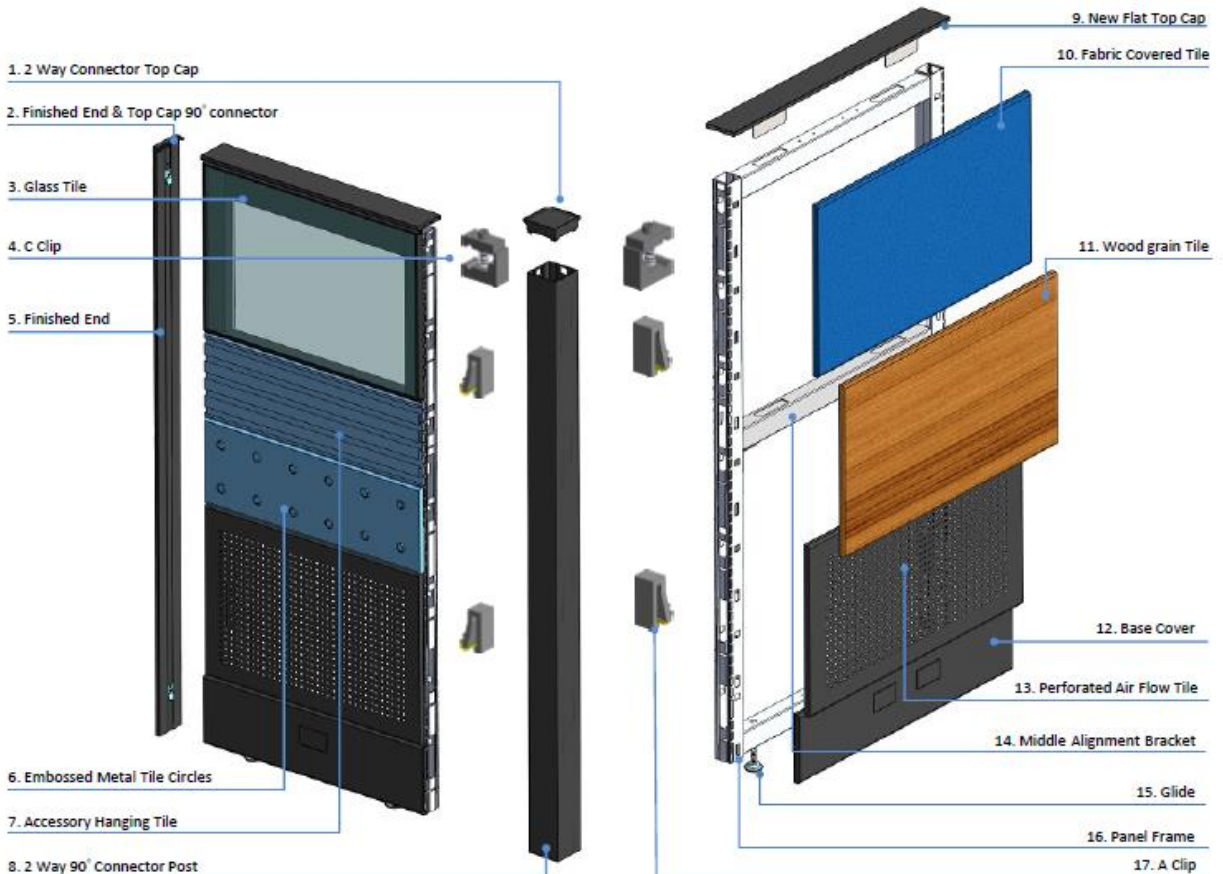


430.6A

## STANDARD SIZE OF PANEL



## PANEL SYSTEM ASSEMBLY





**TrendForm®**  
The Value System

[www.trendform.net](http://www.trendform.net)

[www.cusptw.com](http://www.cusptw.com)



**CUSP INTERNATIONAL ASSOCIATES INC.**

OFFICE: 4F., NO. 212, SEC. 2, SINYI ROAD, TAIPEI, TAIWAN 10651

EMAIL: [DETAIWAN@MS17.HINET.NET](mailto:DETAIWAN@MS17.HINET.NET)

TEL: +886-2-3393-1567 • FAX: +886-2-3393-2526

FACTORY: **ZHONG SHAN LONG LIFE FURNITURE CO., Ltd.**

No.3, FUXING ROAD, SAN JIAO TOWN, ZHONG SHAN CITY,  
GUANG DONG, CHINA 528445

TEL: +86-0760-2815-6789 • FAX: +86-0760-2815-6799