



CUSP

International Associates Inc.

Mesh Chair Seating Series

Change the way people sit

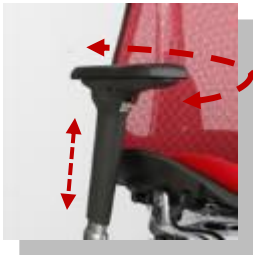






Athena

ITEM CODE : A8



Adjustable Armrest

Armrest is adjustable for 25° three position armrest swivel in or out and 180° outwardly. Adjustable armrest height for 70mm (2¾")



Seat High adjustment

Adjustable seat height for 90mm.



Synchro-tilt

Backrest and seat tilt in unison. Back tilts more than seat and is tension adjustable.



Lockable back angle

Adjustable backrest tilt angle with 90° - 100° - 110° three lockable positions.



Tilt tension control

Increase or decrease tilt tension depending on user's bodyweight.

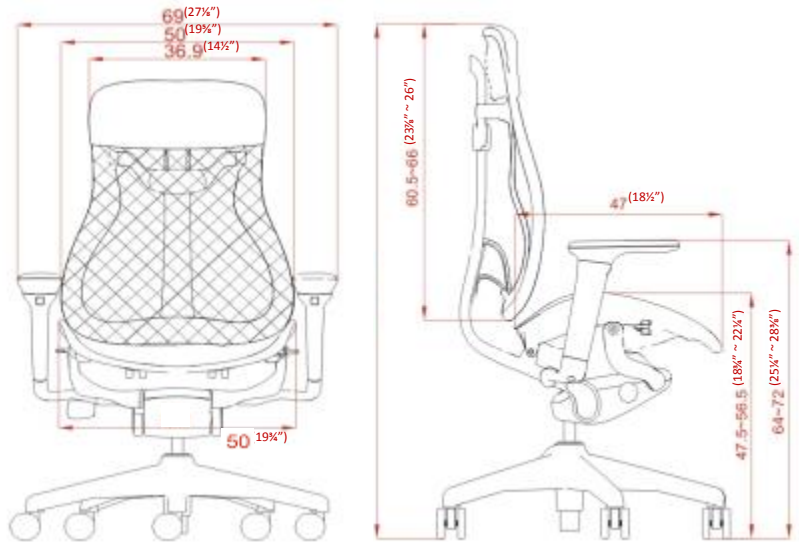


Adjustable Back Height

Back height is adjustable for 65mm (2½")



Dimension



KEY FEATURES

- ◆ This chair and all the parts have passed BIFMA x5.1 standard.
- ◆ All functions are **control-by-cable**.
- ◆ **Synchro-tilt:**
Backrest and seat tilt in unison. Back tilts more than seat and is tension adjustable.
- ◆ Material options:
BP (Black painting finished with Nylon Fiber 5-star base) and **CP (Chrome plated aluminum finished with Aluminum 5-star base)**
- ◆ Upper Material Option: mesh, fabric(with no extra charge) and leather
- ◆ Seat Option: mesh, fabric, leather, foam

▲ A8—CPMM: A8—CP with Mesh back and Mesh seat

Leader

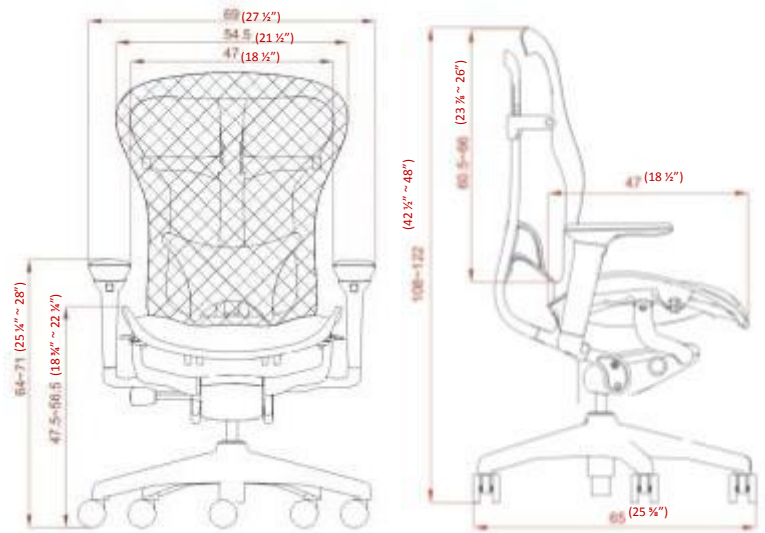
Dimension

ITEM CODE : A9



Adjustable Armrest

Adjustable armrest height for 70mm (2¾")



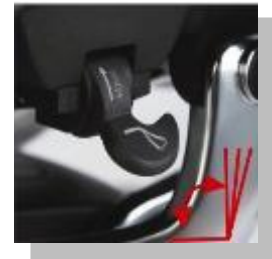
Adjustable Armrest

Armrest is adjustable for 25° in or out and 180° outwardly.



Synchro-tilt

Backrest and seat tilt in unison. Back tilts more than seat and is tension adjustable.



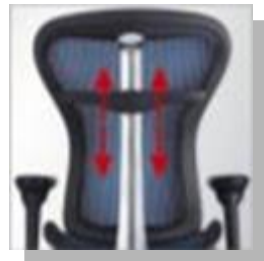
Lockable back angle

Adjustable backrest tilt angle with 90° - 100° - 110° three lockable positions.



Tilt tension control

Increase or decrease tilt tension depending on user's bodyweight.



Adjustable Back Height

Back height is adjustable for 65mm (2½") in three lockable positions.



Seat High adjustment

Adjustable seat height for 90mm.

KEY FEATURES

◆ This chair and all the parts have passed BIFMA x5.1 standard.

◆ All functions are **control-by-cable**.

◆ **Synchro-tilt:**

Backrest and seat tilt in unison. Back tilts more than seat and is tension adjustable.

◆ Material options:

BP (Black painting finished with Nylon Fiber 5-star base) and **CP (Chrome plated aluminum finished with Aluminum 5-star base)**

◆ Upper Material Option: mesh, fabric,(with no extra charge) and leather,

◆ Seat Option: mesh, fabric, leather, foam



▲ ▶ A9—CPMM: A9—CP with Mesh back and Mesh seat



▲ A9—CPMMSF: A9—CP with Mesh back and Mesh seat and with laptop Shelf and Footrest





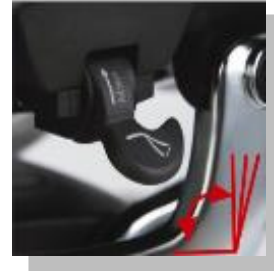


Captain

ITEM CODE : F9

Adjustable Lumbar Height

Back height is adjustable for 65mm (2½")



Adjustable Armrest

Arm pad is adjustable for 25° three position in and outwardly.

Adjustable armrest height for 70mm (2¾")



Seat Depth adjustment

Adjustable seat slider for seat depth for 50mm.

Lockable back angle

Adjustable backrest tilt angle with 90° - 100° - 110° three lockable positions.



Seat High adjustment

Adjustable seat height for 90mm.

Tilt tension control

Increase or decrease tilt tension depending on user's bodyweight.



▲ F9—BPMF: F9—BP with Mesh back and Fabric seat

KEY FEATURES

- ◆ This chair and its components have passed BIFMA x5.1 standard.
- ◆ All functions are **control-by-cable**.
- ◆ **Seat Slide**: Add seat slide to increase the seat depth to provide a more comfortable room
- ◆ Material options: **BP (Black painting finished with Nylon Fiber 5-star base)**
- ◆ Upper Material Option: mesh, leather, and fabric
- ◆ Seat Options: Mesh/ Fabric/ Leather seat, Foam seat



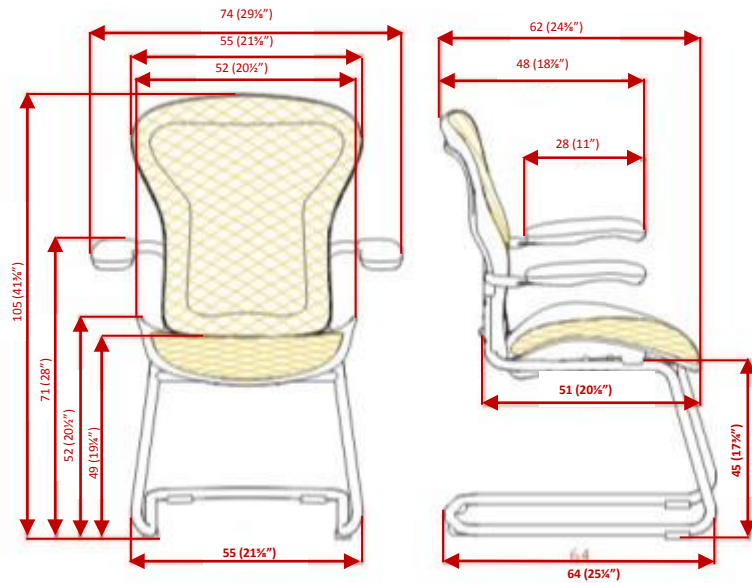
Honor

Dimension

ITEM CODE : C9

Guest Chairs

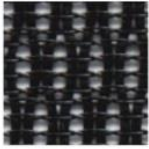
- ◆ This chair has passed BIFMA x5.1 standard.
- ◆ Material options: **BP (Black painting finished)** or **CP (Chrome plated finished)**
- ◆ Upper Material Option: mesh, fabric (with no extra charge), and leather



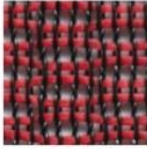
▲ C9—BPMM: C9—BP with Mesh back and Mesh seat

Color Option

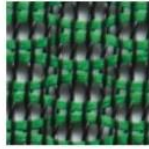
Wave Mesh



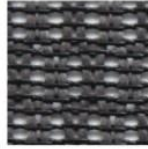
YM90-11A



YM90-12A



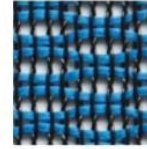
YM90-14A



YM90-10A-1

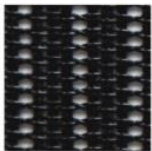


YM90-13A

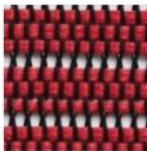


YM90-15A

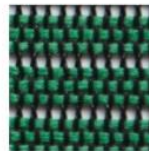
Straight Mesh



YM90-41T



YM90-42T



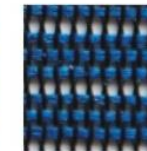
YM90-44T



YM90-40T



YM90-43T



YM90-45T



YM91-31



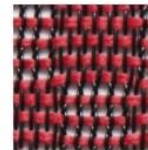
YM91-33



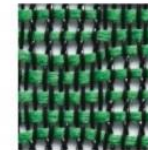
YM91-35



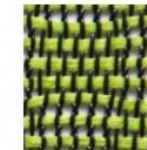
YM91-30



YM91-32



YM91-34



YM91-36

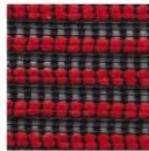
Mesh



YM-71C



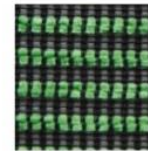
YM90-70C



YM90-72C



YM90-73C



YM90-74C

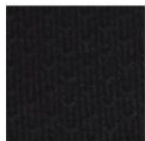


YM90-75C



YM90-77C

Fabric



TX-011



TX-012-1



TX-013-1



TX-016



TX-010



TX-013



TX-015



TX-017

Leather



Laptop Shelf and Footrest



5-stage adjustable



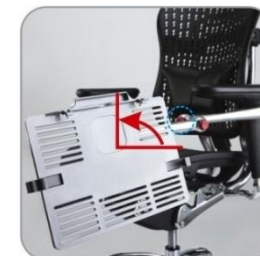
360° rotating adjustment



1. The tension of Laptop Shelf is adjustable
2. 360° rotating adjustment



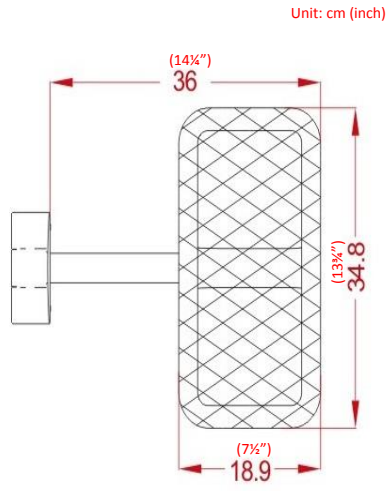
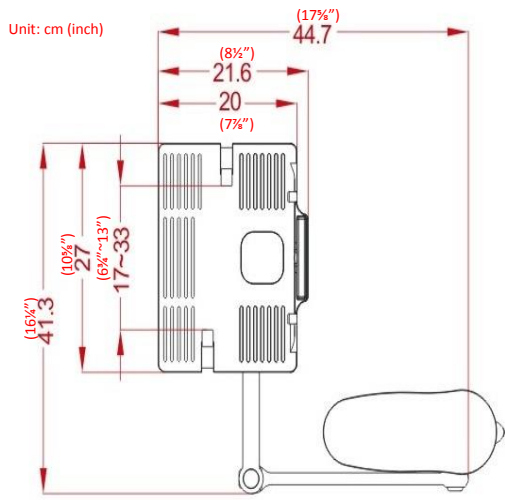
Forward and backward adjustment for 45°



90° flipped adjustment

▲ A9—CPMMSF: A9—CP with Mesh back and Mesh seat and with laptop Shelf and Footrest

Dimension



Upward and downward adjustment



Slide adjustment for 115mm



- ▶ A8—CPMMSF: A8—CP with Mesh back and Mesh seat and with laptop Shelf and Footrest



CUSP

International Associates Inc.

Website: www.cusp.com.tw
Email: detaiwan@ms17.hinet.net